

VIGILIA

SHIPPING BV



VIGILIA

Facts about Vigilia Shipping

- Dutch barge operator in 5th generation
- Head office in Zwijndrecht Netherlands
- CEO Michel van Gent
- 35 Employee
- 12 barges (5 owned by Vigila)
- Trading area west & east Europe

SHIPPING BV



Michel & Xander van Gent

VIGILIA

Cargo - Stone in bulk



VIGILIA

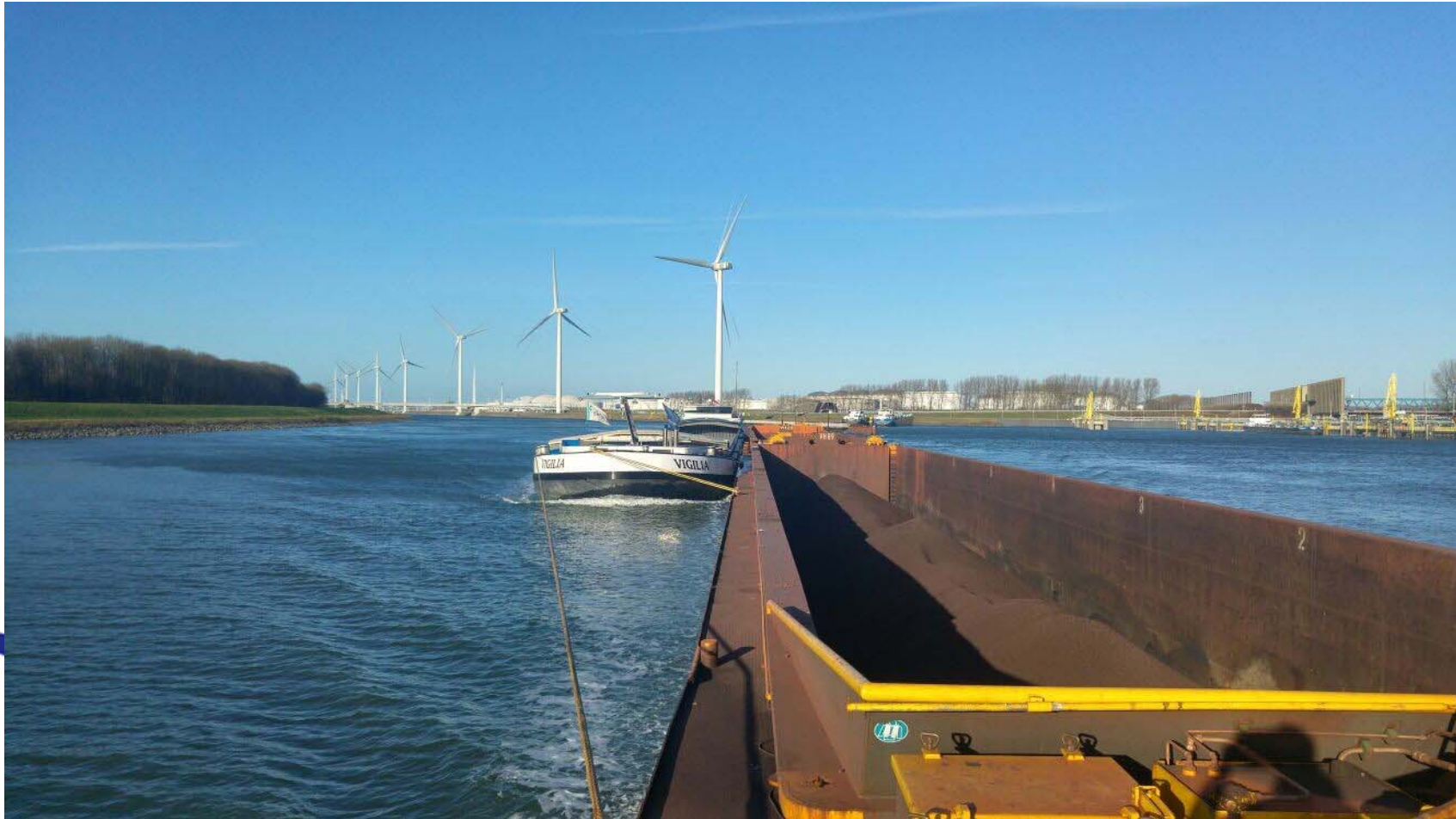
Cargo – containers



Shuttle service to from Rotterdam to hinterland terminals

VIGILIA

Cargo - Iron ore Rotterdam - Duisburg



8.000 tons cargo = 300 trucks

Inland navigation =



WIGILLIA

Crew onboard – Education level



Crew on the Amice exist of 4 people (24 hours operation)
2 captains + 2 sailors

VIGILIA

Wheel house



- Navigation aids & safety systems for navigation in all conditions
- Adjustable height for bridge passings

Safe navigation

- ✓ AIS - Radar system
- ✓ River traffic control
- ✓ Remote controlled locks
- ✓ Intergration in supply chain



Port of Rotterdam – Traffic Control

VIGILIA

Engine power & Manouverbility



Diesel engines
Euro5 standard



High manouverbility
Strong rudders & Propelles

VICILIA

Equipment on deck



WIGILLA

Living area for Captain & Family



Vessel types

ECMT category	Vessel Name	Dimensions & Capacity	Trucks
I	Spits	Length 38.50 m - width 5.05 m - draught 2.20 m - cargo capacity 350 t	14X
II	Campine vessel	Length 55 m - width 6,60 m - draught 2,59 m - cargo capacity 655 t	22X
III	Dortmund-Eems canal vessel	Length 67 m - width 8.20 m - draught 2.50 m - cargo capacity 1,000 t	40X
IV	Rhine-Herne canal vessel (Europe vessel)	Length 85 m - width 9.50 m - draught 2.50 m - cargo capacity 1,350 t	54X
Va	Large Rhine vessel	Length 110 m - width 11.40 m - draught 3.00 m - cargo capacity 2,750 t	120X
Va	Extended large Rhine vessel	Length 135 m - width 11.40 m - draught 3.5 m - cargo capacity 4,000 t	160X
Vb	Two lighter pushing unit	Length 172 m - width 11.40 m - draught 4.00 m - cargo capacity 5,500 t	220X
Vib	Four or six lighter pushing unit	Length 193 m - width 22.80 / 34.20 m - draught 4.00 m - cargo capacity 11,000 / 16,500 t	440/660X
Vic	Standard tank vessel	Length 110 m - width 11.40 m - draught 3.50 m - cargo capacity 3,000 t	120X

ECMT Category	Vessel Name	Dimensions & Capacity	Trucks
Vb	Large tank vessel	Length 135 m - width 21.80 m - draught 4.40 m - cargo capacity 9,500 t	380X
Va	Car vessel	Length 110 m - width 11.40 m - draught 2.00 m - cargo capacity 530 cars	60X
III	Container vessel (Campine class)	Length 63 m - width 7 m - draught 2.50 m - cargo capacity 32 TEU	16X
Va	Standard container vessel	Length 110 m - width 11.40 m - draught 3.00 m - cargo capacity 200 TEU	100X
Vb	Large container vessel	Length 135 m - width 17 m - draught 3.50 m - cargo capacity 500 TEU	250X
Va	Ro-ro vessel	Length 110 m - width 11.40 m - draught 2.50 m	72X
Vib	Coupled formation (vessel with pushed lighter)	Average length 185 m - width 11.40 m - draught 3.50 m - cargo capacity 6,000 t	240X
Vib	Coupled formation (vessel with pushed vessel)	Average length 185 m - width 11.40 m - draught 3.50 m - cargo capacity 6,000 t	240X

Inland waterways in EU



VIGILIA

Movie Danube Amice

- <https://vimeo.com/144094598>

SHIPPING BV



VIGILIA

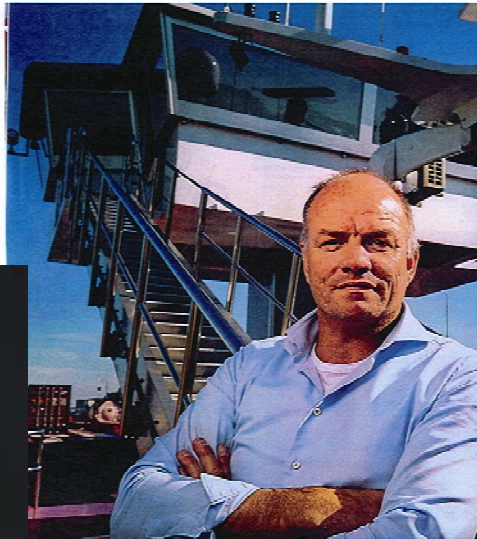
Movie Amice & Vigilia for Thyssen

- <https://vimeo.com/144001711?ref=em-share>

SHIPPING BV



Driving force behind inland navigation



Thank you for attention



Michel van Gent